

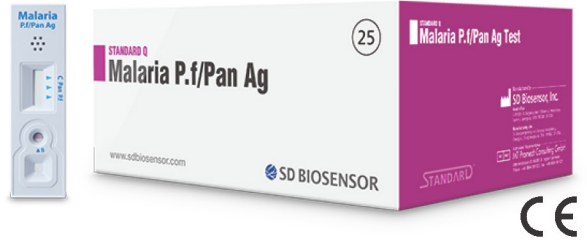
**STANDARD Q**

# Malaria P.f/Pan Ag SD BIOSENSOR

STANDARD Q Malaria P.f Ag qualitatively analyzes Plasmodium falciparum and Plasmodium species antigens in whole blood using immunochromatography. The target antigen is Histidine-Rich Protein II (HRP-II) of Plasmodium faciparum and plasmodium lactate dehydrogenase (pLDH) of Plasmadium species, and the screening test result can be obtained within 15 minutes with its high sensitivity and specificity.

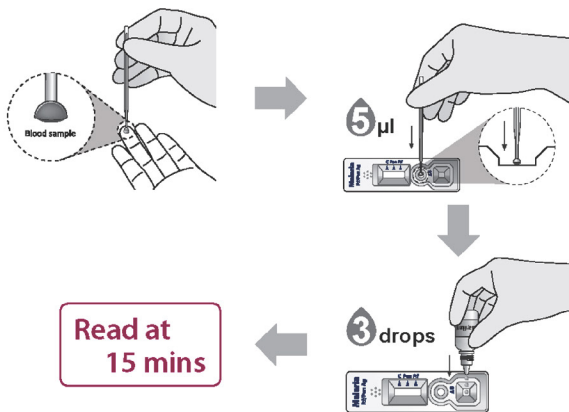
**GENERAL INFORMATION:**

- Distinguish the infection between P.falciparum and others
- Optimized on-site diagnosis with the small diagnostic kit
- Able to read positive/negative infections fast and accurately with a little blood (5µl)
- Room temperature storage
- Suitable for Point of Care Testing
- No need for extra equipment

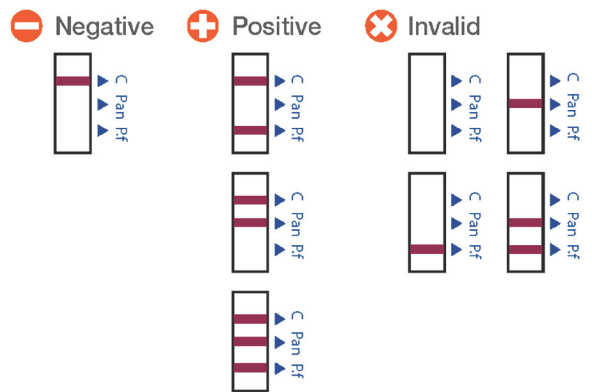


Specification	
Specimen	Serum/Plasma/Whole Blood
Test Time	15 mins. (Do not read after 20 mins.)
Specimen Volume	10µl
Storage Temperature	2-40°C / 36-104°F

**TEST PROCEDURE**



**INTERPRETATION**



**TEST PERFORMANCE**

Reference	Sensitivity	Specificity
Venous Whole Blood Microscopy	P.f confirmed specimen on P.f line (99.58%, 476/478) P.f confirmed specimen on Pan line (56.69%, 271/478) Pv., P.m. and P.o. confirmed specimen on Pan line (100%, 129/129) Pf. and P.m.co-infection confirmed specimen on P.f line: 100% (11/11) Pf. and P.m. co-infection confirmed specimen on Pan line: 72.73% (8/11)	100% (1000/1000)
Capillary whole blood Microscopy	P.f confirmed specimen on P.f line (99.68%, 312/313) P.f confirmed specimen on Pan line (41.21%, 129/313) P.f confirmed specimen on Pan line (41.21%, 129/313) Pf. and P.m.co-infection confirmed specimen on P.f line: 100% (11/11) Pf. and P.m. co-infection confirmed specimen on Pan ine: 72.73% (8/11)	100% (250/250)

**ORDERING INFORMATION**

Category	Product	Pack Size
Vector Borne Disease	STANDARD Q MalaraiP.f/Pan Ag Test	25 Test